



**adroit**

adding new benchmark in  
perfection and technology.



**adroit**  
Engineering & Beyond

Proficiency is an  
Obsession for us.

## Overview

Established in 1994, as a partnership firm, Adroit had no capital but a passion to spread their wings in the electrical / control automation field. The core of our business is dedicated to marketing / manufacturing of electrical & automation control products / systems. Adroit team is dedicated to provide the best solution when & where the customers need them most. Owing to continuous quality upgradation, assured after sales service & on the time delivery track record, Adroit has its 80% business share contributed by repeat orders. Adroit is being appreciated by Industry leaders because we take time to listen. Through dialogue, we can determine how our expertise can best serve our customers. Whether the result is simple product supply, product development, system design, after sales service or other technical support. Most of the leading industrial houses like Subros, Whirlpool, Supreme, Bisleri, Samsung, LG, ITCOL, Action Shoe, Liberty, Dabur, Emami, TATA, JBM, Schneider, Siemens, Woodward, ISGEC etc. entrusted us Adroit commitment towards the finest quality and developing competence to international standards, has yielded its name in international market through export to Europe, America, Bangladesh, Sri Lanka, Dubai, Nigeria & Egypt etc.

Adroit the idealist tech savvy offers high-tech control products through its product marketing division, **Adroit Control Engineers**, a partnership company operational from its headquarterd at Delhi and Application based solutions & fully integrated systems are engineered & manufactured at its manufacturing division, **Adroit Control Engineers (P) Ltd.** based at Faridabad, Haryana. These divisions make Adroit a strong contender to act as a single source for the market.



## Infrastructure

From nothing to a modern office & a factory Adroit has come a long way. Adroit runs corporate & marketing activities from its 5200Sqft modern office at Okhla Industrial Area in Delhi. The great ambience is mixed with great work culture. The office is equipped with all modern communication & comfort facilities. System integration is engineered at 20000Sqft factory in Faridabad, an industrial hub of Haryana, in outskirts of Delhi. The factory is equipped with modern machinery, tools & tackles enabling workforce to deliver the best in time.



**Mission** To become India's most admired companies committed to excellence.

**Vision** Being a customer obsessed company delivering value beyond expectations.

# The Business

At Adroit business is all about understanding the sensitivity of having a powerful Brain i.e. a Control System for your equipment. Like a brain along with its nervous system and sense organs proves to be the control system for the human body, Adroit provides you complete Control System(s) along with the appropriate set of sensors, control and power devices for your machine equipment or system. Adroit is your source for vast array of products & services required while you measure, monitor or control any physical parameter & logic function either on your machine or in process and we are committed to provide the best solutions as required by you.

**Coming  
together**  
is beginning.

**Keeping  
together**  
is progress.

**Working  
together**  
is success.



# Quality Policy

**"To achieve Total Customer Satisfaction with deliveries of cost effective quality products/services meeting requirement of QMS, by doing the right things, on time, every time."**

**Quality is a very crucial concern in anything that is purchased today. We keep a major eye on the Quality Control, whether it is about the product we market, the product we manufacture or in the services that we provide. We possess some of the very important Quality Certification as per the international standards.**

**Once joined hands with us, we leave no stone unturned in giving the best Quality ever.**

**Adroit is an ISO 9001:2000 certified company. "ADROIT" make Electrical Custom-built Assemblies are certified by Central Power and Research Institute (CPRI), Bhopal and qualifies all major Indian Standard (IS) specifications .**



**Adroit's marketed products comes from ISO accredited companies & have most of International approval like CE/UL etc.**



## Our Strength

- ◆ Edge in quality, technology & cost
- ◆ Innovative concepts
- ◆ Technological core competency
- ◆ Competency of a different order
- ◆ Same competency- diverse applications
- ◆ Compliance to international and Indian standards
- ◆ Unmatched customer service levels agreements
- ◆ Young, talented, enthusiastic and committed team



## Services:

In the last few years we have left a mark in the field of Control Panel Development and services. With the kind of skills and experience we have in our work, we make sure you avail the best solutions for the technical challenges.

- ❖ **Conceptualising, Designing & Commissioning:** For the appropriate concept of Control System, the designing and manufacturing is done only after a detailed R&D of the concerned industry. Once the system is ready, then the whole installation and commissioning part is taken care of.
- ❖ **Preventative Maintenance / Refurbishment:** A more cost-effective solution to routine maintenance by proactive test and routine maintenance activities are carried out under controlled conditions in our repair center. All tests carried out in accordance with original manufacturing specification.
- ❖ **Service Exchange:** Proactive 'repair by replacement' facility is available for specific instrumentation products. Each exchange program is developed specifically to suit the product type & application. All replacement units are either new or refurbished and are provided with guarantee.



*Customer service is not a department, it's an attitude!*

**We understand the kind of services one need at times & again.**

## Our Clientele:

Our clientele list comprises of high-end corporate to the two-man machine shop, our customers come back again and again as they know that we'll respond promptly in a professional manner. Some of our clients are:



We are registered with all major Government / PSU / Consultants / Corporate Houses and our approved name is incorporated in their vendor list and had repeatedly given us an opportunity to serve them.

# Our Product Range

**Our Product Business could cater most of your component needs of a close loop automation system. Most of the following products are available of the shelf:**

## Sensors / Transmitters / Transducers:

- ◆ Position Detection Sensor Inductive: Photoelectric / Magnetic / Capacitive / Ultrasonic / RFID / Encoders .
- ◆ Displacement Sensors: LVDTs, Linear / Rotary Scales- Potentiometric / Magneto restrictive, Contact / Noncontact versions
- ◆ Force / Load / Torque / Transducers:
- ◆ Electrical Transducers: Standard or Programmable for Voltage / Current / Frequency etc
- ◆ Temperature Sensors : Thermocouples / RTDs / Thermowells / Cables & connectors
- ◆ Pressure Sensors
- ◆ Level Sensors
- ◆ Flow / Humidity / Transmitters & application specific sensors available on request.



## Interface Devices:

- ◆ Signal conditioners / Isolators / Converters / Transducers / Multipliers
- ◆ DC Power Supply (SMPS), DC-DC Converters, DC-AC Inverters
- ◆ I/P & I/V Converters
- ◆ Electromechanical / Solid State relay boards, PLC I/O Interface Modules
- ◆ Communication Protocol converters



## Instrumentation & Controls:

- ❖ Process Control Instruments: Digital panel Indicators / Controllers, PIDs
- ❖ Bar-graph indicators & totalisers
- ❖ Data Acquisition Systems: Scanners / Data loggers / Recorders
- ❖ Flameproof Instruments: Digital Indicators / Controllers / Scanners
- ❖ Programmable Logic Controller & SCADA System
- ❖ Protection relays / Timers, Counters, Large Displays
- ❖ Digital Panel Meters, Energy meters-Utility & Tariff Class, Maximum demand controllers
- ❖ Test & measuring Devices: Multi-meters, Tong testers, Insulation testers & earth testers
- ❖ Portable / Handheld Digital Meters: Temperature & Humidity / Tachometers / Calibrators



## Power & Switching Devices:

- ❖ Ac variable frequency drives, digital dc drives & servo system
- ❖ Thyristor power Regulators & SCRs Solid State relays / Contactors



## Peripherals

- ❖ Quartz Emitters
- ❖ Infrared Heaters- Quartz-clear Gold & Silver Coated, Multi-pole heavy Duty connectors
- ❖ Radial Blowers & Axial Fans



# Our Business Associates

To deliver latest control products  
adroit associate with following leading national & international brands.

## Pepperl + Fuchs



Pepperl+Fuchs is a leading developer and manufacturer of electronic sensors and components for the global automation market. Continuous innovation, enduring quality, and steady growth guarantees continued success since more than 60 years. Pepperl+Fuchs employs 3,700 people worldwide and has manufacturing facilities in Germany, USA, Singapore, Hungary, Indonesia and Vietnam, most of them ISO 9001 certified.

- ◆ Counters, Tachometers, displays & Signal Conditioners
- ◆ Doors, gates and elevator monitoring devices
- ◆ Colour and print mark Detection
- ◆ Electromagnetic Sensors
- ◆ Ultrasonic Sensors
- ◆ Rotary Encoders
- ◆ As-Interface
- ◆ Photoelectric Sensors
- ◆ Identification System
- ◆ Safety System
- ◆ Inductive/Capacitive/Magnetic



## Gefran



The Gefran group is based in Italy, and is directly present in 11 countries with 6 production plants. Over the years Gefran has developed a strong international presence in the key western markets, and established direct presence in fast growing markets. Global coverage is ensured by more than 70 authorized distributors all over the world. Gefran Spa is listed since 1998 on the Milan stock exchange and since 2002 in the "high performance" Star segment.

- ◆ Modular Power Controller and Solid State Relays
- ◆ Contactless Absolute Linear Transducers
- ◆ Indicators/Alarm Units, Timers/Counters
- ◆ Melt Pressure Transducers
- ◆ PID Temperature Controllers
- ◆ Humidity Transmitters
- ◆ Displacement Transducers
- ◆ Pressure Transducers



## Rishabh Instruments



Rishabh Instruments Pvt. Ltd., a 20 year young organization that has built its core competence in manufacturing, design and development of Test and Measuring Instruments and Industrial Control Products on strong fundamentals; in terms of people, infrastructure and financials. The company provides a hands-on, value driven, professional environment with people being its most important asset.

- ❖ Signal Converters/ Multipliers
- ❖ Protector Trip Relays
- ❖ Electrical Transducers
- ❖ Insulation Tester
- ❖ Digital Panel Meters
- ❖ Multifunction Instruments
- ❖ Digital Multi Meters



## L&T-Yaskawa



Yaskawa is the world's largest manufacturer of ac drives and motion control products, including adjustable frequency drives, servo amplifiers, servomotors, machine controllers, and motion controllers.

- ❖ Industrial AC Drive
- ❖ Spindle Drive and Motors
- ❖ Servo System and Motion Controllers
- ❖ Commercial HVAC Drives
- ❖ Programmable Logic Controller
- ❖ Soft Starters



## CST



Crydom is the world leading manufacturer of Solid State Relays. They manufacture and sell two of the most renowned brands of solid state relays, Crydom and Crouzet. Our product offer includes thousands of catalog off-the-shelf items, as well as custom-designed solid state relays and related products

- ❖ Panel Mount Solid State Relay (DC)
- ❖ Auxiliary Modules/Controllers
- ❖ Din-Rail Mount Solid State Relay
- ❖ Panel Mount Solid State Relay



## PT Limited



PT Limited is a manufacturer of a comprehensive range of weighing Load cells available from 300g to 450 tonne capacity. The extremely reliable load cells are manufactured to OIML standards and have been supplied for over 30 years to India.

- ◆ Indicators, Controllers & Displays
- ◆ Beam and Singlepoint Load Cells
- ◆ Compression / Tension / S-Beam / Universal Load Cells
- ◆ Load Cell Conditioners, Junction Boxes, Surge Arrestors etc.



## Honesom



Honesom is specialized at infrared emitters and offers our customers a broad range of products that match their business needs. The products they produce play an important role in many products such as industrial drying machine, curing equipments, and other consumer products.

- ◆ Quartz infrared lamp
- ◆ Twin Tube Short wave I.R. emitters
- ◆ Twin Tube Medium wave I.R. emitters
- ◆ Twin Tube Fast medium wave I.R. emitters
- ◆ Quartz / Silica tubes



## Elstein



Elstein operates worldwide in more than 80 countries many of our standard-products are available from stock. Trained personnel offers technical advice and support with the heater selection, additional skills concerning machine- and IR-plant engineering and construction. Is are at disposal, for definition, construction and usage of complete heating panel.

- ◆ Ceramic Infrared Heater
- ◆ Reflector Units / Systems



## Dynamic Motors



Dynamic motors and services, are the manufacturers of centrifugal blowers with built in Outer Rotor Induction Motor. These blowers are designed and manufactured with indigenous technology, by a team of quality conscious and dedicated team. Dynamic Motors And Services has established and applies a quality management system for Design, Manufacture and Supply of Centrifugal Fans With Motor, Axial Fans With Motor and Universal Motors.

- ❖ Radial Blowers (Single Entry, Double Entry)
- ❖ Axial Fans



## Mean Well



Mean Well Enterprises Co., Ltd. is one of the leading switching power supply manufacturers in Taiwan. Established in 1982, it gained ISO-9001 certification in 1994. Our product lines include AC/DC switching power supplies, DC/DC converters, DC/AC inverters and battery chargers.

- ❖ Enclosed/Din Rail/ Modular/Open Frame
- ❖ Switch Mode Power Supply
- ❖ DC-AC Converter / LED Power Supply
- ❖ Battery Charger



## Nippon Instruments



NIPPON INSTRUMENTS (I) Pvt. Ltd. & NIPPON TECHNOLOGIES has devoted it's entire resources to the Design & production of PROCESS CONTROL INSTRUMENTS & SENSORS since last 15 Years. They are fired by the passion to push the limits of technology on INSTRUMENTATION. The products have become the benchmarks for High performance. The quality control is under hawk eyed technical Supervision of qualified engineers.

- ❖ Temperature Indicators / Controllers
- ❖ Process Scanners / Dataloggers
- ❖ Flame Proof Indicators / Controllers
- ❖ Programmable Digital Timers / Counters
- ❖ Process Indicators / Controllers
- ❖ Humidity Instruments



# Our Integrated Panels

## Control systems... the brain infusing brilliance in your industry...!!!

Apart from the world class products that we market for our associate, we take special efforts to make it a whole integrated system as per the requirement of the clientele at Adroit Control Engineers (P) Ltd. A control system is a device or set of devices to manage, command, direct or regulate the behavior of other devices or systems. We have an impressive list of client for Subros, Whirlpool, Supreme, Bisleri, Samsung, LG, ITCOL, Action Shoe, Liberty, Dabur, Emami, TATA, JBM, Schneider, Siemens, Woodward, ISGEC etc. integrated control panels and besides that we also have our specialisation in providing different industries with customized Control Panels as per the accordance of the required application of the industry.

Our System business could cater for most of your needs of application engineering & CPRI approved electrical & automation/control panels; Our Products range from fully intelligent, engineered & custom tailored, LT Switch Board, over control panel to terminal boxes & marshalling cubicles.

## Electrical Panels:

Adroit is one of the most reliable name in electric control panels manufactures & suppliers located in India. We offer diverse variety of power and electrical panels. Electrical control panels that we produce are offered to our clients at most competitive prices.

- ❖ LT Switch Board.
- ❖ Power Distribution Boards.
- ❖ Motor Control Centers.
- ❖ APFC Control Panel.
- ❖ Automatic Slip ring Starters.
- ❖ DG AMF & Synchronizing Panels.
- ❖ Bus Bar Ducts & Trunks.
- ❖ Metering & protection relay Panels.



## Automation & Control Panels:

Adroit is a versatile company that provides automated manufacturing system solutions. From simple control panels, process and machine control panels, PLC programming or delivering complete "turnkey" manufacturing or process control systems, our skilled staff is here to take your project from concept to Commissioning.

- ❖ PLC Control Panels.
- ❖ DC/AC Drive Panels.
- ❖ Instrumentation Panels.
- ❖ Relay Logic Panels.
- ❖ Control Desk.
- ❖ Operator Consoles.



## Application Based Control System

This particular range comprises of some specialised panels which are integrated for making specific application go easy and hence save time. The integration of these control systems is done keeping in mind the basic but critical requirement of an industry. Enlisted below are some amazing Application based control panels, which are of acute credibility.

- ❖ Hot Runner Temperature Controller
- ❖ High Voltage Test Sets
- ❖ Crane controls
- ❖ High Pressure Test Bench Systems
- ❖ Car Parking Control Systems
- ❖ Control Systems for Plastic Machinery



# Software Based Automation System

In today's world of head to head competition, to attain competitive effectiveness, managements need to have real time information of plant and processes. To achieve this computers have become an integral part. Be it R&D, manufacturing or testing, automation of the process makes it efficient and accurate. PC based automation and testing can give tremendous flexibility, scalability and analytical capability to the process and makes it reliable and repeatable when it is less human dependent.

Adroit provides test engineering and automation solutions to many diverse verticals. We clearly focus on providing solutions in automation and automated test engineering, which are typically computer based, We build software with GUIs, databases and reports.

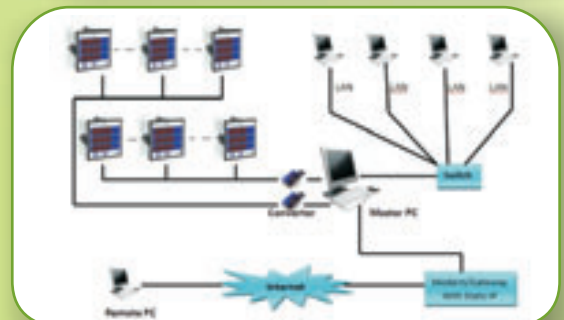
Though we cover many different markets, our core competency is system integration, where we integrate state-of-the-art hardware components and build software with effective functionality and scalability to integrate as per a specific requirement. Few of Our Applications are :

## Energy Management System

Our EMS solutions are intended to put the customer in control of their energy consumption through monitoring and automated billing.

**Its versatility leads from simple and powerful features.**

- ◆ Plug and Play Enterprise Level EMS
- ◆ Fast Data Scan rates @ 150 ms / meter
- ◆ Integrates with all Energy Meters offering a physical communication port
- ◆ Multiuser login / Password protection
- ◆ Customized bills and reporting
- ◆ Alarm Listing
- ◆ Tariff / Utilities
- ◆ Real time management Reports



# Testing Solutions

Our Validation and Test Solutions empower customers to control quality and minimise the defects. Few featured testing applications are developed by us .

## a. Cable Testing –

Our cable testing solutions focuses on automating the process of multi core cable testing for various properties like Attenuation, Velocity of propagation, Impedance, Cross Talk (NEXT, PSFEXT etc.). Some of the features of our solutions are :

- ◆ Automatic Selection of Cable Pairs
- ◆ Temperatures Correction Facility
- ◆ Measurements at different lengths of cables
- ◆ Measurements at different Frequencies
- ◆ Comprehensive and comparative test report for all parameters
- ◆ Automated and fast test results
- ◆ Results saved in desired format for reporting and future reference
- ◆ Real time management Reports



## b. Pressure Testing –

Pressure Testing solution provided by Adroit has got immense uses with the industries and comes with :

- ◆ Customised reporting
- ◆ Data available in various formats (PDF, Excel etc.)
- ◆ Reports available in non editable format
- ◆ Easy and consumer friendly
- ◆ Physical Parameter
- ◆ Real time management Reports

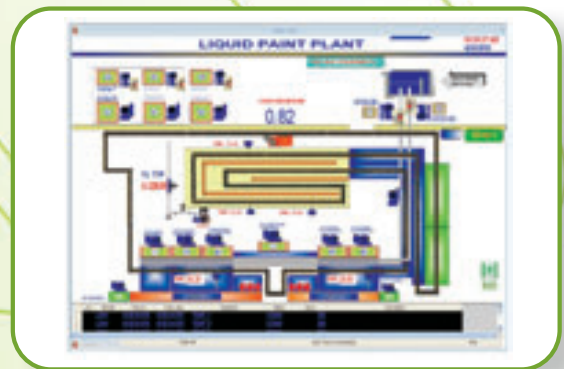


# Plant and Machine Automation

Production plants, depending on the product or commodity they produce, have different challenges and different needs. However, one commonality they share is the need for technology that lowers costs of design, construction, and overhead, and optimizes the efficiency of workflow processes. Adroit produces intelligent technology designed to streamline structural plant design and planning, optimize material flow, and support workflow management.

Features : -

- ◆ Reduces operational costs
- ◆ Production Monitoring
- ◆ Provides immediate knowledge of system performance
- ◆ Improves system efficiency and performance
- ◆ Increases equipment life
- ◆ Reduces costly repairs
- ◆ Reduces number of man-hours (labor costs) required for troubleshooting or service
- ◆ Facilitates compliance with regulatory agencies through automated report generating
- ◆ Real time management Reports





**adroit**  
Engineering & Beyond

## **Adroit Control Engineers**

---

A-105, DDA Sheds, Okhla Industrial Area,  
Phase-II, New Delhi-110020  
Ph.: +91-11-47600700, Fax : 47600701  
E-mail : sales@adroitcontrol.com

## **Adroit Control Engineers Pvt. Ltd.**

---

Plot No.-3, Krishna Industrial Area,  
Opp. Sector-25, Near Shri Jee Dharmkanta,  
Ballabgarh, Faridabad-121004  
Ph. : +91-129-4251400, 4063473/74, Fax : 2441619  
E-mail : acepl@adroitcontrol.com